



QuietRock® DensArmor Plus® 528



Paperless, mold-resistant soundproof drywall

Perfect where drywall is exposed to moisture during construction or occupancy

QuietRock® DensArmor Plus® 528 provides the simplest, lowest-cost, most reliable way to combine top-notch noise reduction, mold resistance, abuse resistance and low indoor air emissions in a Type X, UL-classified panel. Other assemblies would require additional materials and labor to approach its performance.

QuietRock DensArmor Plus 528 is designed in a cooperative effort with Georgia-Pacific Gypsum. A single sheet of QuietRock DensArmor Plus 528 on one side of single studs provides a fire-rated, highly mold-resistant assembly that meets building code for party walls.

QuietRock DensArmor Plus 528 Benefits

- Superior performance at lower total installed cost than other soundproofing assemblies
- STC ratings of 50-58
- 5/8" thick, UL-classified and ULC-listed, Type X equivalent
- Fiberglass mat facings and a specially treated gypsum core, provide mold resistance per ASTM D 3273¹
- Abuse-resistant when tested in accordance with ASTM C 1629
- Fiberglass mat gypsum panels are manufactured to meet applicable sections of ASTM C 630, ASTM C 1396, ASTM C 1177, ASTM C 1629, ASTM C 1658, CSA-A82.27.M
- Low indoor air emissions²
- Easy to cut; tapered edge; hangs and finishes like standard drywall; no metal inside panels
- Outperforms other soundproofing methods, including soundboard and resilient channel
- Front is tapered, back is fiberglass- faced and flat, suitable for tile
- Helps keep projects on schedule, saving money
- Environmentally friendly, lab tested
- Worldwide patents pending

Product Ordering Codes

4' x 8' panel:	QR528DAP4X8
4' x 9' panel:	QR528DAP4X9
4' x 10' panel:	QR528DAP4X10
4' x 12' panel:	QR528DAP4X12



STC Comparison**

5/8" gypsum	34
Cinderblock	38
Soundboard	42
Mass loaded vinyl	43
QuietRock DensArmor Plus 528	50-58

**in typical assemblies

Product Specifications

Model:	QuietRock DensArmor Plus 528
Thickness:	5/8"
Surfacing:	Front is tapered, back is fiberglass-faced and flat, suitable for tile
Weight:	2.9 lbs/sqft
STC-rated:	50-58 (ASTM E90)
Fire-rated:	1 hour
Surface flame:	Class A (ASTM E84)
Water absorption:	<5% (% of weight)
R value:	0.5

¹Indicates no mold growth in a 4-week controlled laboratory test from the DensArmor Plus components of the QuietRock panels. The mold resistance of any building product when used in actual job site conditions may not produce the same results as were achieved in the controlled, laboratory setting. No material can be considered mold proof. When properly used with good design, handling and construction practices, QuietRock DensArmor Plus 528 provides increased mold resistance compared to standard paper-faced wallboard products.

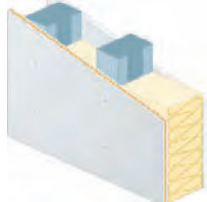
²Components of the panel and polymer have low indoor air emissions.

Georgia-Pacific logo and all trademarks are owned by or licensed to Georgia-Pacific Gypsum LLC

The information contained in this document is preliminary and for general information purposes only. Features and specifications are subject to change. The diagrams and stated STC ratings listed are intended to serve as a guide. Construction practices have an influence on final STC ratings. Quiet Solution cannot guarantee actual STC ratings. Flanking sound patterns, the integrity of the wall, and floor and ceiling construction are important factors in effective sound control.

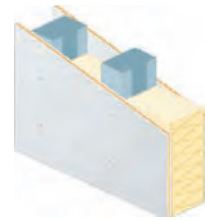
Steel Stud Assemblies

Steel Stud Wall
QuietRock DensArmor Plus 528
on one side, 5/8" Type X
on the other



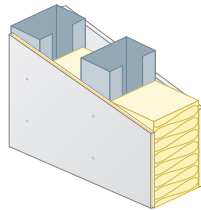
STC: 56 - Fire: 1 Hour

Steel Stud Wall
QuietRock DensArmor Plus 528
on both sides



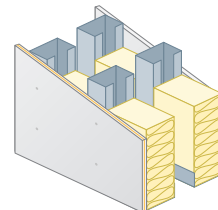
STC: 58 - Fire: 1 Hour

6" Steel Stud Wall
QuietRock DensArmor Plus 528
on one side, 5/8" Type X
on the other



STC: 57 - Fire: 1 Hour

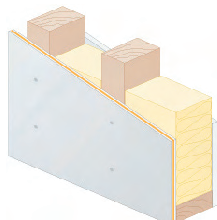
Double Steel Stud Wall
QuietRock DensArmor Plus 528
on one side, 5/8" Type X
on the other



STC: 59 - Fire: 1 Hour

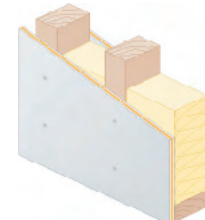
Wood Stud Assemblies

Wood Stud Wall
QuietRock DensArmor Plus 528
on one side, 5/8" Type X
on the other



STC: 50 - Fire: 1 Hour

Wood Stud Wall
QuietRock DensArmor Plus 528
on both sides



STC: 54 - Fire: 1 Hour