



QuietRock® 510



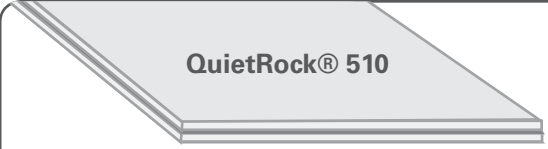
**Score
Snap
Hang**

Lowest-cost solution for remodels and commercial

QuietRock 510 soundproof drywall is the lowest cost noise reduction wall panel on the market. With a simple score, snap and hang, QuietRock 510 installs and finishes like standard drywall, requiring no special tools.

QuietRock 510 Benefits

- Great value, offering solid performance at the lowest cost on the market
- Delivers STC ratings of 49-68
- UL fire-rated
- Ideal for remodels and upgrades – installs over existing drywall, with no demolition
- Continues to reduce noise even when fixtures are installed, such as shelves or lamps
- Only 1/2" thick
- No metal
- Outperforms other soundproofing methods, including soundboard and resilient channel
- Environmentally friendly, lab tested



QuietRock® 510

QuietRock is a multi-layer engineered drywall panel made of gypsum and viscoelastic sound absorbing polymers.

STC Comparison*

5/8" gypsum	34
Cinderblock	38
Soundboard	42
Mass loaded vinyl	43
QuietRock 510	49-68

*in standard wood construction

Product Specifications

Model:	QuietRock 510
Thickness:	1/2"
Weight:	2.2 lbs/ft ²
STC-rated:	49–68 (ASTM E90)
R value:	0.45
UL-rated assemblies:	U301, U305, U309, U311, U320, U331, U334, U340, U341, U342, U440, U451, U453, U455, U465, U473, U493

Product Ordering Codes

4' x 8' panel:	QR510STD4X8
4' x 9' panel:	QR510STD4X9
4' x 10' panel:	QR510STD4X10
4' x 12' panel:	QR510STD4X12

Applications

- Bedrooms
- Music rooms
- Media rooms
- Basements
- Recording studios
- Multi-family
- Party walls
- Schools
- Hotels

Model	Description	Thickness	STC	Fire Rating	Features	Applications
510	Solid performance, lowest cost	1/2"	49-68		Score/snap/hang, lightest weight, no metal, As low as \$39.95*	Remodeling and upgrades
516	Designed for 16" OC studs	1/2"	46-49	Not rated	Low cost, reduces noise by 70%, no metal	Single family residences
525	Fire-rated, score and snap	5/8"	51-72		Score/snap/hang, Type X replacement	Multifamily, hotels, hospitals, commercial
527	Fire-rated, Designed for UltraSTEEL studs	5/8"	55+		Score/snap/hang, Engineered for best performance on UltraSTEEL	Commercial, UltraSTEEL stud construction
528	DensArmor™ Plus Type X Fire-rated Mold-resistant	5/8"	50-58		Paperless, mold-resistant, abuse-resistant	Bathrooms, basements, laundry rooms and other high moisture areas
530	High-end retrofits plus shear resistance	5/8"	52-74		Shear/impact-resistant, mold-resistant (optional), pre-primed (optional)	Multifamily, commercial, schools, high-end home theaters, hallways
530RF	Adds RF shielding	5/8"	52-74	Type X, 1 hour	Designed for RF and noise shielding	SCIF rooms and medical shielding
545THX	Highest performance	1-3/8"	56-80	2 hours (estimated)	The only THX™ certified drywall, superior sound isolation, even at 50 Hz	High-end home theaters, commercial theaters, studios

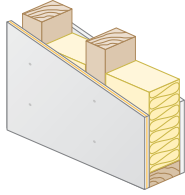
*For volume purchases. See your local dealer for details. STCs shown are on 24" wood studs, except for 516.



QuietRock® 510

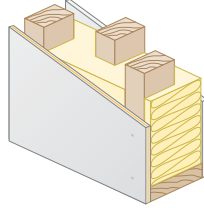
Lowest-Cost Solutions in the Market

Lowest Cost Wall
QuietRock on one side



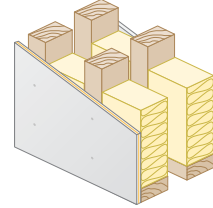
STC: 49

Staggered Stud Wall
QuietRock on one side



STC: 54

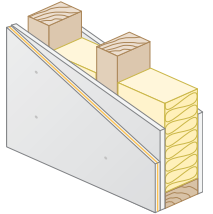
Double Stud Wall
QuietRock on one side



STC: 60

Retrofit and Remodeling

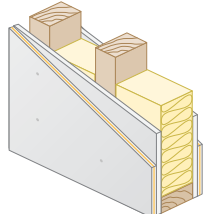
Single Stud Wall
QuietRock on one side of existing drywall



STC: 47

*UL Design #:
U301, U305,
U309

Single Stud Wall
QuietRock on both sides of existing drywall

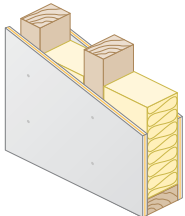


STC: 54

*UL Design #:
U301, U305,
U309

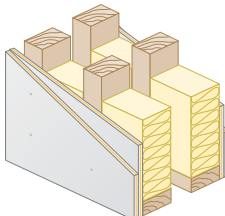
High Performance

Single Stud Wall
QuietRock on both sides



STC: 52

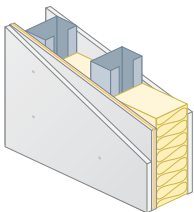
Double Stud Wall
Double layer of QuietRock on both sides



STC: 68

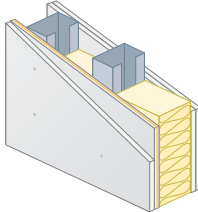
Steel

Single Stud Wall
QuietRock under one side of Type X drywall



STC: 54 - Fire: 1 Hour

Single Stud Wall
QuietRock under Type X one side
2x Type X other side



STC: 56 - Fire: 1 Hour

Applications

- Bedrooms
- Music rooms
- Media rooms
- Basements
- Recording studios
- Multi-family
- Party walls
- Schools
- Hotels

*See Acoustic and Fire Assemblies document for more information.

**Not for use on ceilings except under another layer of gypsum

The information contained in this document is for general information purposes only. Features and specifications are subject to change. The diagrams and stated STC ratings listed are intended to serve as a guide. Construction practices have an influence on final STC ratings. Quiet Solution cannot guarantee actual STC ratings. Flanking sound patterns, the integrity of the wall, and floor and ceiling construction are important factors in effective sound control.

STCs shown are on 24" wood studs.