



# QuietRock® ES

HIGHER PERFORMANCE, HIGHER RELIABILITY LOWER COST SOUNDPROOFING SOLUTIONS.

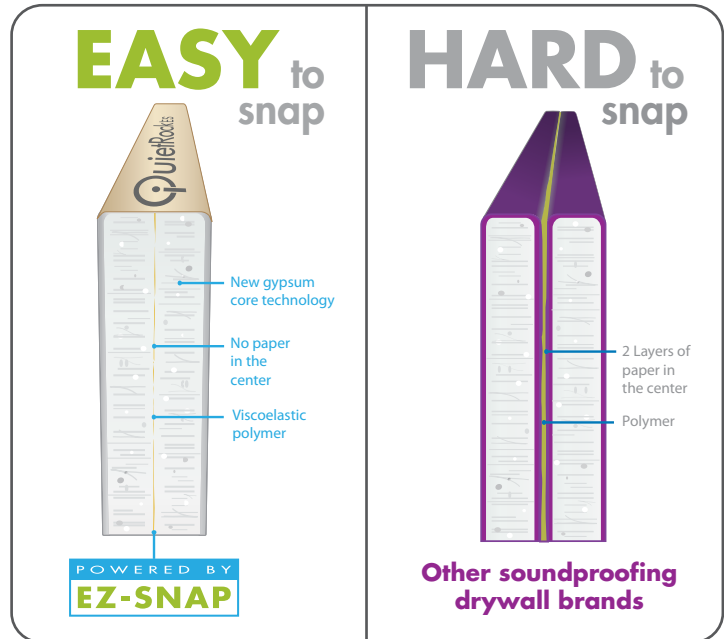


## Lowest cost, true score and snap with EZ-SNAP technology

QuietRock ES is the first sound damped drywall that easily scores and snaps using breakthrough EZ-SNAP technology. QuietRock ES has no paper or metal in the center, offering easy score and snap like standard drywall, yet still providing acoustical ratings up to STC 60 on single stud construction. This patent pending product is easier and less expensive to install than any other noise reducing drywall and is ideal for residential and commercial construction.

### QuietRock ES Benefits

- Powered by EZ-SNAP for true score and snap
- 4x easier to snap than any other acoustical drywall
- Faster to install for increased productivity and lower labor costs
- Less materials save time, money and waste
- Maximizes usable floor space by using just a single layer
- Outperforms other noise reduction methods, including soundboard and resilient channel
- High reliability: unlike resilient channel, cannot be easily short circuited
- Abrasion resistant paper



### Product Ordering Codes

|                 |             |
|-----------------|-------------|
| 4' x 8' panel:  | QRESSTD4X8  |
| 4' x 9' panel:  | QRESSTD4X9  |
| 4' x 10' panel: | QRESSTD4X10 |

### Product Specifications

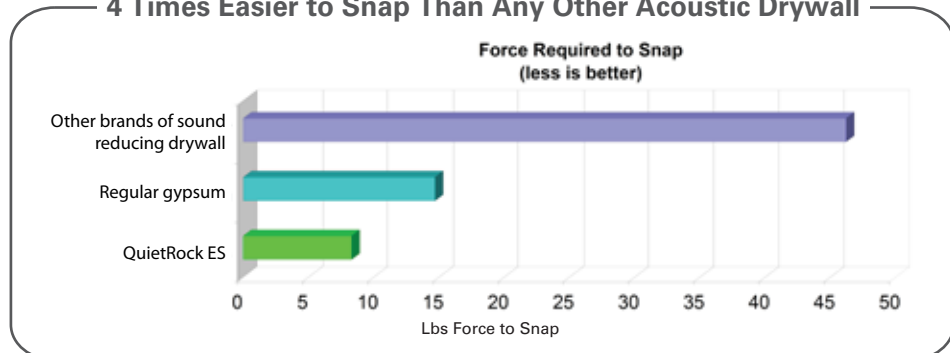
|                        |  |
|------------------------|--|
| <b>Model:</b>          | <b>QuietRock ES</b>  |
| <b>Thickness:</b>      | 5/8", tapered edges  |
| <b>Weight:</b>         | 2.6 lbs/sqft   |
| <b>STC-rated:</b>      | 51-60 (ASTM E90)   |
| <b>Fire-rated:</b>     | 1 hour, Type X   |
| <b>UL Assemblies:</b>  | U017, U026, U032, U040, U204, U207, U301, U302, U305, U309, U314, U326, U329, U330, U332, U337, U338, U339, U340, U341, U342, U344, U351, U354, U355, U356, U357, U358, U360, U364, U369, U374, U376, U379, U386, U411, U418, U420, U421, U425, U434, U439, U442, U449, U450, U460, U465, U466, U467, U473, U475, U485, U487, U494, U502, U504, U505, U510, U512, U531, U609, U615, U617, U622, U623, U626, U633, U646, U647, U648, U651, U652, U926, V417, V419, V420, V421, V430, V432, V434, V463, V464, X508, X516, X517, X525, X526, X528 |
| <b>ULC Assemblies:</b> | W313, W317, W322, W404, W412, W413, W415, W433, W447, W459, W460, W465   |

### Applications

- Multi-family
- Commercial
- Hospitals
- Hotels
- Schools
- Party walls



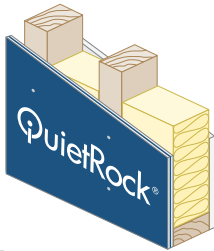
### 4 Times Easier to Snap Than Any Other Acoustic Drywall



## Common Wall Assemblies

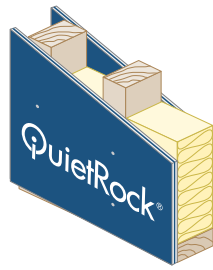
### Single Wood Stud Wall\*

**Lowest Cost Wall**  
QuietRock ES on one side,  
Type X on the other



**STC: 51**

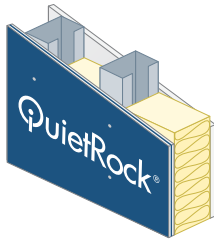
**Single Stud Wall**  
QuietRock ES on both sides



**STC: 54**

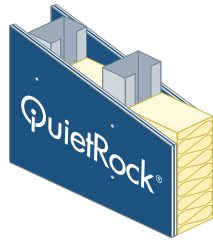
### Light Gauge Single Steel Stud Wall\*

**Single Steel Stud Wall**  
QuietRock ES on one side,  
Type X on the other



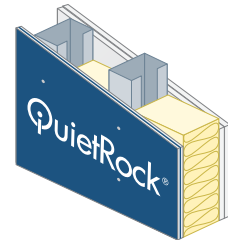
**STC: 55**

**Single Steel Stud Wall**  
QuietRock ES on both sides



**STC: 57**

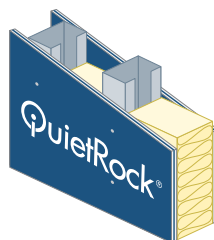
**Single Steel Stud Wall**  
QuietRock ES on one side,  
double Type X on the other



**STC: 60**

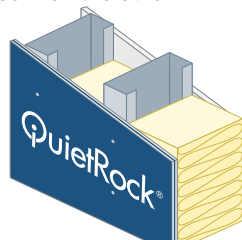
### Heavy Gauge Single Steel Stud Wall\*\*

**3-5/8" Single Steel Stud Wall**  
QuietRock ES on both sides



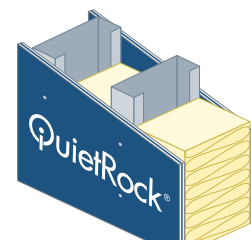
**STC: 48**

**6" Single Steel Stud Wall**  
QuietRock ES on one side,  
Type X on the other



**STC: 49**

**6" Single Steel Stud Wall**  
QuietRock ES on both sides



**STC: 53**

\*STCs shown are on 24" OC \*\* STCs are shown on 16" OC

See Acoustic and Fire Assemblies document for more information.

The information contained in this document is for general information purposes only. Features and specifications are subject to change. The diagrams and stated STC ratings listed are intended to serve as a guide. Construction practices have an influence on final STC ratings. Serious Energy cannot guarantee actual STC ratings. Flanking sound patterns, the integrity of the wall, and floor and ceiling construction are important factors in effective sound control.