

# Quiet Soundproofing System

Installation Instructions  
(For QuietRock ES & ES Mold Resistant)

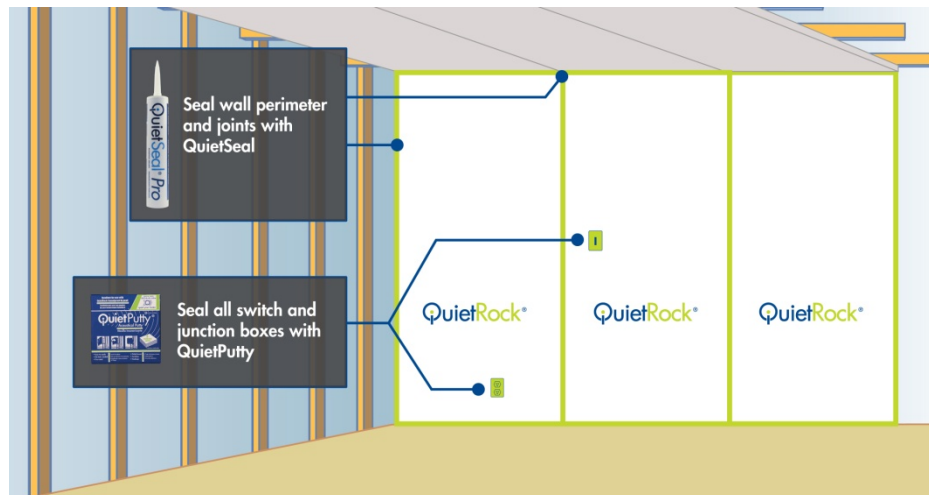
**Read all instructions before installation. Remember: Safety first!**

## IMPORTANT:

- Do not remove any of the edge tape on the QuietRock EZ-SNAP products
- Hang QuietRock immediately or store flat in a dry location
- Do not store QuietRock in direct sunlight.
- Protect the QuietRock materials from exposure to moisture during the construction or remodeling process, from product storage to project completion.
- Moisture or water can cause problems with any drywall product, including QuietRock.
- Do not cover with plastic for extended periods, as that may cause condensation.
- Utilizing the complete QuietRock Soundproofing System is important to maximize acoustic performance in your assembly; it is recommended that you use QuietSeal Pro around the perimeter and unbacked seams as well as QuietPutty at any penetrations such as electrical outlets, HVAC ducts, water hookups and cables. *Not using QuietSeal Pro and QuietPutty may compromise the acoustical results of the installation.*

Please completely read these instructions below before beginning installation and be sure to always follow all OSHA safety guidelines when installing any Serious Energy product.

## The Quiet Soundproofing System



## QUIETPUTTY: WRAP ELECTRICAL OUTLETS AND SEAL PENETRATIONS TO PREVENT NOISE LEAKAGE

QuietPutty has been specifically designed to maintain the performance of acoustically rated walls with penetrations. It is designed to acoustically seal electrical, phone and other penetrations. No tools are required. To ensure adequate adhesion, all surfaces shall be clean and free of dust, grease, oil, loose materials, rust or other substances.



- 1) Inspect the outlet box to make sure it is properly installed and free of dust, grease, oil, loose materials, rust or other substances. Remove the release paper from both sides of the QuietPutty pad.



- 2) Starting at side, align the QuietPutty pad to front edge of box and overlap onto the stud. Cut the QuietPutty pad to allow the pad to fit around conduits or cables.



- 3) Pleat the extra material at the corners. Fold the pleated corners into place and firmly press the QuietPutty pad into place so that the entire surface of the back of the outlet box is covered and sealed against drywall stud.

### **QUIETROCK EZ-SNAP: APPLY TO ASSEMBLY TO REDUCE NOISE BETWEEN PARTITIONS**

The QuietRock EZ-SNAP line of engineered products are soundproofing panels designed to take the place of multiple layers of drywall or any other noise reduction methods. QuietRock EZ-SNAP is an easy score and snap noise reducing gypsum board which includes highly engineered internal sound damping layers that provide dramatically increased transmission loss compared to traditional methods like resilient channel. It can be used with a variety of standard framing techniques including single, staggered and double stud construction.

### **INSTALL PER ASTM STANDARD OR GYPSUM ASSOCIATION GUIDELINES**

- Standard Specification for Application and Finishing of Gypsum Board ASTM C 840-04
- Recommended Levels of Gypsum Board Finish: GA-214
- Application and Finishing Gypsum Panel Product: GA-216

### **Score and Snap:**

- 1) QuietRock EZ-SNAP panels similarly to other 5/8" gypsum wall products can be snapped, drilled, cut and attached to the frames. QuietRock EZ-SNAP is designed to easily score and snap with any utility blade.



Score



Snap

#### Hang as usual:

- 1) Secure QuietRock EZ-SNAP panel to the studs using appropriate Bugle Head drywall screws every 12" or as required by code. Use coarse thread for wood studs and fine thread for metal studs. Nails may also be used only on wood studs. You may also place QuietRock EZ-SNAP over existing drywall in retrofit applications. Do not use structural glue, when hanging QuietRock EZ-SNAP.\*



- 2) Finish securing the QuietRock EZ-SNAP panel to the studs with drywall screws. The screw head should go just below the surface of the paper. If you accidentally break through the surface, drive another screw nearby.

#### **QUIETSEAL PRO: PROPERLY SEAL AROUND PERIMETER OF WALL, FLOOR, CEILING, PENETRATIONS AND ANY SEAM UNBACKED BY A STUD TO MAINTAIN HIGH ACOUSTIC PERFORMANCE**

- 1) Clean all surfaces before installation so they are free of dirt, grease, wax, dust, corrosion, moisture or any material that may interfere with obtaining optimum adhesion
- 2) For new construction before the top and bottom stud plates and end studs are installed, run two 1/8"-3/8" beads of QuietSeal Pro between them and the wall, floor and ceiling.
- 3) Apply a 1/4" bead of QuietSeal Pro around the perimeter of the wall or floor/ceiling assembly. Ensure that the QuietSeal Pro is airtight between the QuietRock/QuietWood/Drywall/Wood and the adjacent wall floor or ceiling.
- 4) For the best acoustic isolation, apply QuietSeal around the perimeter of each panel before putting up the next sheet.
- 5) Seal around all electrical and plumbing outlets with QuietSeal Pro.



#### Tips

For very large gaps, first fill the opening with a pre-molded loose-cell filler or backer rod.

When using on the edges of the panels, the adjacent sheet of QuietRock EZ-SNAP should “squeeze” the QuietSeal Pro in between them. Be sure to remove excess QuietSeal Pro with a rag or putty knife as needed. Wipe off any excess QuietSeal Pro. DO NOT LEAVE QUIETSEAL PRO ON THE SURFACE, AS IT CAN INTERFERE WITH TAPE, MUD, PAINT AND OTHER FINISHING STEPS.

## **SURFACE FINISH PER ASTM STANDARD**

- Standard Practice for Use of Sealants in Acoustical Applications: ASTM C919-08

## **Using QuietRock EZ-SNAP in Ceiling Construction**

To use QuietRock EZ-SNAP panels on a ceiling application, simply follow the above instructions for walls. CONSULT LOCAL BUILDING CODES ON SCREW PLACEMENT. It is advised that you use a drywall lift to install any drywall on ceilings properly.

## **Fire Information**

- 1) Check [www.QuietRock.com](http://www.QuietRock.com) website or [UL website](#) for fire rating information.
- 2) Check with code authority to verify that QuietRock EZ-SNAP panels can be added to your specific assembly

## **General Notes**

Follow all OSHA guidelines when completing any construction project. Use normal care and precaution when working with Serious Energy’s products:

### QuietPutty:

- Cleanup with soap and water.
- Dispose of excess QuietPutty in the same responsible manner as you would any building material.

### QuietRock

- Lift the panels using OSHA guidelines, e.g. do not bend over and lift using back muscles; instead use the leg muscles.
- When cutting or scoring large amounts of drywall, follow OSHA regulations concerning exposure to gypsum dust, including wearing appropriate protective masks if ventilation required.
- QuietRock contains no materials more hazardous than standard drywall. Dispose of excess QuietRock in the same responsible manner as you would any building material.
- When finishing joints, adequate ventilation is recommended for temperatures within the enclosure should stay within the range of 50° to 95°F (10° to 35°C).

### QuietSeal Pro

- QuietSeal Pro can be easily removed with soap and water. Wear disposable gloves, for easier clean-up.

For further information see the Material Safety Datasheet (MSDS) on line at [www.QuietRock.com](http://www.QuietRock.com).